

Output power:	max. 100 Watt	Typical applications:	Laboratory plating lines
DC current:	max. 10A (at 10V)	Precious metal plating	Reel-to-reel plating
DC voltage:	max. 30V (at 3A)	PCB lines	Manual plating lines

DC power supply with switch mode technology, designed for for installation into cabinet.



POWER STATION pe1210, front view (5A and 10A Typ),



POWER STATION pe1210, back view (5A and 10A Typ)

Characteristic values

Linearity inaccuracy:

- for amperage < 1 %
- for voltage < 1 %

Ripple less than < 1 % (0 - 300 Hz)

Efficiency typical: up to 82%

Powerfactor cos φ 0,52 and higher

Constant current and voltage control

Soft start function

Mains supply: 230 V +/- 10 % / 50-60 Hz
(other voltage on request)

Cooling

Air cooled, convection cooling

Ambient temperature 5 - 40°C

Display

Status-LED, Blink-Codes

Design

black anodized Aluminium housing, protection grade IP20

DC connector pluggable

Mains supply pluggable

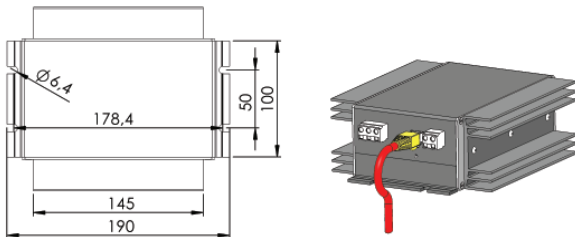
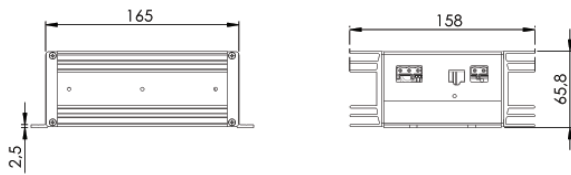
Control terminal via RJ45

Optionally the rectifier can also be installed in to a 3U/HE rack

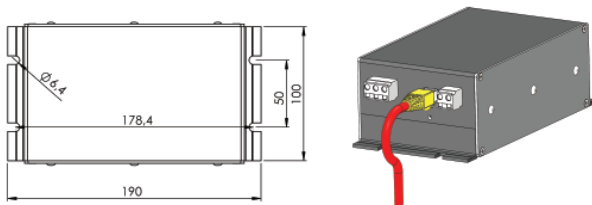
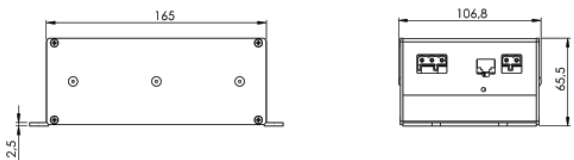
EMV: EN55011 class A, group 1 ; EN61000-6-4 and EN61000-6-2;
CE-conformity IEN50178 - low voltage guide line

Values	Standard sizes - DC output ¹						other sizes on request
	3 A			5 A			
DC current	3 A			5 A			10 A
DC voltage	10 V	20 V	30 V	10 V	20 V	10 V	
Mains supply	230 V AC						
Weight	approx. 1,5 kg						

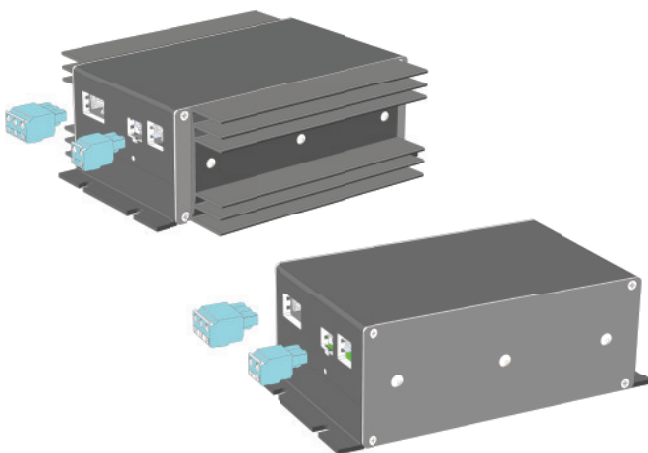
Standard dimensions



Module with 5 - 10 A output current



Module with max. 3 A output current



Control

Standard: peRB-interface

Interface-components by the pe900-series:

PROFIBUS
RS485-BUS
peRB-BUS-Switch
analogue-converter
24V power supply



Control unit pe280 for the controlling of DC power supplies

Designed for electroplating applications

Large 3-line LCD-display, Keypads for
easy programing/selection

Current and voltage infinitely adjustable

by UP / DOWN buttons

Current and voltage preset

Ampere-hour counter (totalizer)

Protection grade: IP54

Ambient temperature max. 40°C



Optional available functions

Preset counter, dosage counter *

Ramp function (start / stop ramp)

Timer function for ON / OFF *

Voltage / current alarm *

Operating hours counter

Chopper timer (pulse-capable rectifier type requested)

Pole changer function (mechanical / electronic) *

Programmable DC steps (14 individual steps) *

Extern ON

* Indication / alarm output

Control via: RS485, PROFIBUS, TCP/IP (other on request)

Technical equipment, design and features: subject to change! For further information please contact plating electronic GmbH.

plating electronic GmbH
Rheinstr. 4

79350 Sexau
Germany

Fon +49 7641 93500-0
Fax +49 7641 93500-999

www.plating.de
info@plating.de